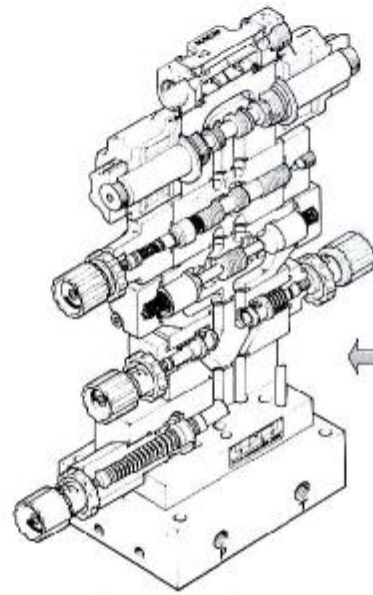
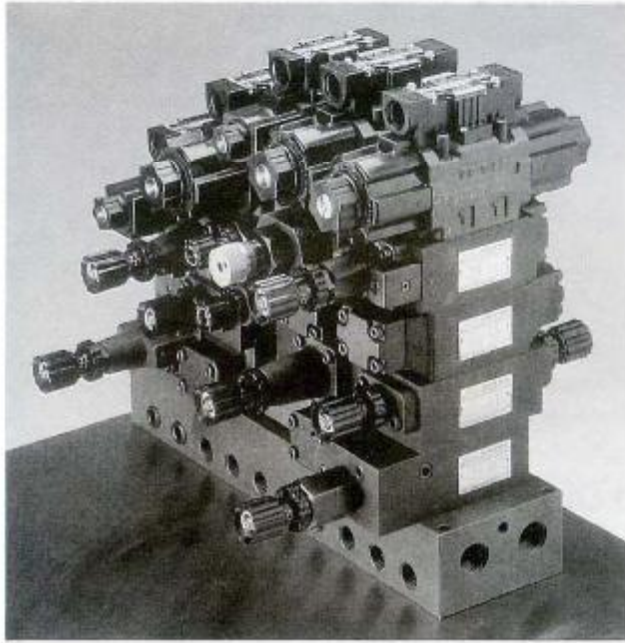
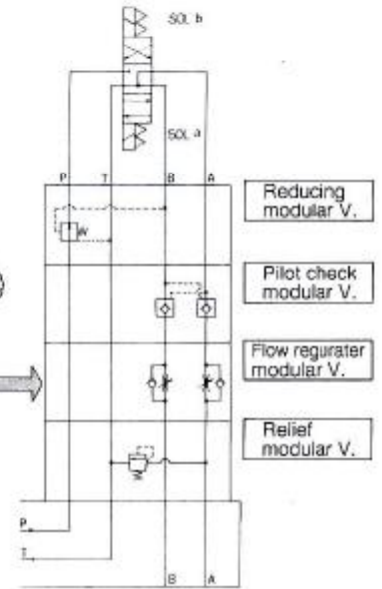


MODULAR VALVE SERIES



Construction



Circuit

Modular valves have been developed and designed to integrate hydraulic circuit with hydraulic equipment. Any type of hydraulic circuit can be set up without piping simply by stacking modular valves one over another.

NACHI modular valves series are a unique valve system expected to contribute greatly to power conservation.

In addition, these valves allow a compact design for a hydraulic circuit, assuring it of improved reliability.

The construction of each modular valve is basically the same as that of the conventional type and the valve performance is also almost identical with the conventional type.

The figure above shows one example of circuit formation, using modular valves.

	Max. Pressure MPa(kgf/cm ²)	Max. Flow (l/min)
01 series	25 (255)	50
03 series	25 (255)	100
06 series	21 (214)	200

Quick reference Model Number

Classification	Type	Model Number			JIS description
		01 series	03 series	06 series	
Pressure Control Valve	Relief Valve	OR-G01-P \times -20	OR-G03-P \times -J50	OR-G06-P \times -10	
		OR-G01-W \times -20	OR-G03-W \times -J50		
		OR-G01-A \times -21	OR-G03-A \times -J50		
		OR-G01-B \times -21	OR-G03-B \times -J50		
	Brake Valve	ORO-G01-B \times -20 W	ORO-G03-B \times -J50 W		
		ORD-G01-W \times -20	ORD-G03-W \times -J50		
		Direct type relief Valve	ORD-G01-A \times -20	ORD-G03-A \times -J50	
	ORD-G01-B \times -20		ORD-G03-B \times -J50		
	Reducing Valve		OG-G01-P \times -21	OG-G03-P \times (B)-J51	OG-G06-P \times -12
		OG-G01-A \times -21	OG-G03-A \times (B)-J51	OG-G06-A \times -12	
OG-G01-B \times -21		OG-G03-B \times (B)-J51	OG-G06-B \times -12		
Pressure control Valve		OQ-G01-P2 \times -20	OQ-G03-P2 \times -J50	OQ-G06-P2 \times -11	